



Special Educational Needs  
& Disabilities



# THE STUDENT'S GUIDE

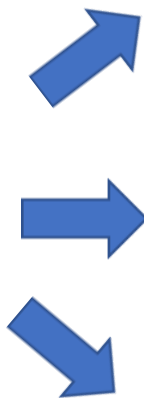


***"The Beauchamps community is a family,  
in which everyone aspires to achieve their best and beyond"***



***“The Beauchamps community is a family,  
in which everyone aspires to achieve their best and beyond”***

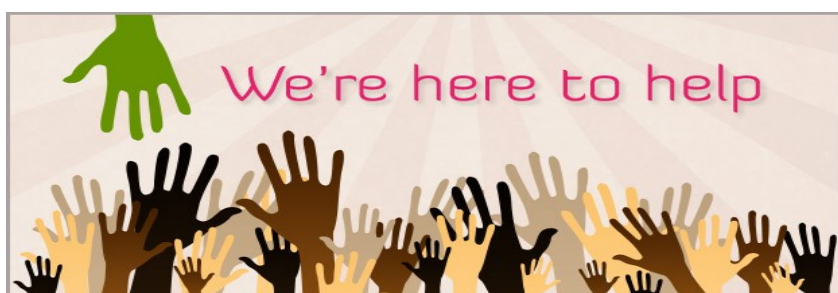
How do staff at Beauchamps  
High School know if I need  
extra help before I begin as a  
student?



Through transition meetings in  
Year 5 and 6

Through school progress  
tracking reports and discussions  
with staff

Through your views and the  
views of your parents and  
carers



**Speak to your Year Lead**



**Speak with any of your class teachers. They plan lessons which are individually designed to help you achieve your very best**

**Mr Mower (Head of Lower School)**

**Miss Bailey (Primary Liaison)**

**Mrs Leforgeais (Year 7 Lead)**

**Mrs Whitehead (Year 8 Lead)**

**Mrs Smith (Year 9 Lead)**

**Mr Leslie (Head of Upper School)**

**Mrs Wilson (Year 10 Lead)**

**Mrs Hampton (Year 11 Lead)**



**Speak to your Form Tutor**

**Speak to your parents or carers and ask them to contact the school's Learning Support Department**



**Who is in the Learning Support Department?**

**Miss Clarkson—SENco**

**Mrs Tippler—Deputy SENco**

**Mrs Long—SEND Manager**

**Mrs Ingram—Deputy SEND Manager**

**How will my work be organised to meet my individual needs?**

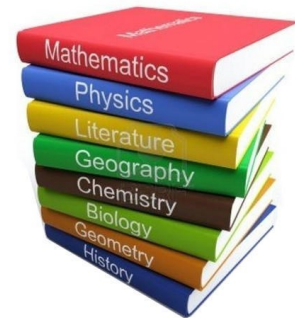
**In many subjects you will be taught in a group who are working at a similar level to you**



**Work will be personalised to help you make the best progress possible**



**Targets will be set to challenge you to achieve your full potential. They are something to work towards but never out of your reach!**



The Learning Support Team and your teachers will be there to help you throughout your time at Beauchamps High school



# HOW DOES IT WORK



## **How will I be involved in planning around my needs?**

Transition starts early from your primary school and we will begin to meet with your teachers at the beginning of year 6. The SENco will attend any review meetings with you and your parents and carers from the beginning of year 5. You are invited to open days and special transition days so you can meet with all members of the Learning Support team and discuss any concerns or questions you have. Your first experience day will happen in Year 5 where you are invited with members of your year group to Beauchamps High School to attend a taster day. You will also be invited to come for a smaller tour of the school and a specific SEND transition day in Year 6 where we will show you more of our school and get to know you and how to best support you before you have even enrolled.



## **How will I be able to tell people my views?**



When you start at Beauchamps High School we may complete a Learning Plan which gives all staff information about you and what your needs are and how we can support you in school. This will be reviewed and updated throughout your time with us. If you have an Education Health Care Plan (EHCP) you will have an annual review meeting and your parents and carers can meet us in between these yearly meetings at any time or talk to us if they have any concerns. You will be invited to all meetings. You can let us know your views or write them down with the help of a LSA. You can also ask your parents/carers to tell us your views.

# HOW DOES IT WORK



## What support might I get in school?

- The very best quality teaching in all lessons. Your teachers will learn all about your needs and how best to support you so when they plan their lessons, you can understand them and ultimately make excellent progress
  - LSA support in lessons
  - Additional help with literacy and numeracy
- Access to specific clubs with focuses such as reading and handwriting
- You are always treated as an individual and the SENco and Subject Lead Teachers will track your progress and listen to concerns you may have and help support you further
- We are only ever a phone call away, if you, your parents or carers have any concerns we will meet with you as quickly as possible to sort them out and help you move forward





# Who else can I be referred to if I need extra support?



Youth Worker  
for mentoring

School  
Nurse

Pastoral  
Team

Bullying  
Ambassadors

Young  
Carers

Wellbeing  
Mentor



Autism  
Anglia

Educational  
Psychologist

Family  
Solutions

EWMHS  
(Emotional  
Wellbeing  
mental health  
service)



The Learning Support Team and your teachers will be there to help you throughout your time at Beauchamps High school





Mrs Ingram –  
Assistant SEND  
Manager



Mrs Dawson -  
LSA



Mrs Trower  
LSA



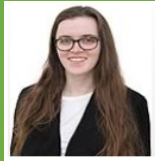
Mrs Flowers  
CoPE Coordinator



Mrs Saunders  
Access  
Arrangements



Mrs Boyce  
LSA



Miss Day  
LSA



Mrs Long SEND  
Manager



Mrs Friswell  
LSA



Miss Langston  
LSA



Mrs Abdul  
LSA



Miss Light  
LSA



Mrs Wybrow  
Wellbeing



Mrs Tippler  
Deputy SENCo



Miss Clarkson  
SENco



Mrs Stephens  
LSA