



BEAUCHAMPS HIGH SCHOOL



Sixth Form
Subject Guide 2026-27



A Message from the Headteacher: Planning Your Future

This is an exciting time for you - a time to make important decisions about your future - and you need to consider your options very carefully. This brochure and our Sixth Form Options events are aimed at giving you the very best advice to ensure you make an informed choice about your next step in life.

Over the years we've been able to get to know many of you very well, and have been fortunate enough to be a part of your journey so far; we look forward to guiding you through these next key decisions. If you are an external student considering applying to our Sixth Form, then we look forward to meeting you and hope we can offer something that will lead you through the next part of your own educational experience.

At Beauchamps, the Sixth Form Team, the Senior Leadership Team, Subject Leaders, subject teachers and tutors will always find time to offer support and advice; we are a team that works for you. If you choose to join our Sixth Form, you will be joining the Beauchamps family community, where we all aspire to do our very best and beyond. The sixth form students have a powerful voice in influencing their learning, and our staff are here to listen. We are ambitious for you and aim to build a partnership that grows and develops during your time with us.



Mr M Harper B.A. Hons NPQH
Headteacher

Why Choose Beauchamps High School Sixth Form?

We are a Sixth Form that is looking to the future and who will support you in both achieving the best possible results and in developing your personal skills as an individual, so that you are fully prepared for the world ahead of you. We offer a broad range of high quality courses which are relevant to your chosen career path; expert advice is provided and your future is taken very seriously by a team of experienced and dedicated teaching staff and mentors. Teaching is tailored to the learning of individuals and students are encouraged to have high aspirations and to become strong independent learners with a passion for asking questions of the world in which they live. There are timetabled supervised study lessons and resources to support advanced learning to the highest level, and extra curricular activities are frequently incorporated in order to develop a more holistic educational experience. All students are provided with both on site pastoral and wellbeing support and a personal learning mentor who will grow to know you as individuals, supporting you in your progress over your time here; we celebrate the successes of our students in all areas of life, and are proud of the family ethos that the Sixth Form offers.

One of the best ways to choose a sixth form is to look at the results that students have achieved. Annually, our results place Beauchamps High School as one of the leading A Level centres in the local area and well ahead of many sixth forms and colleges. We look forward to welcoming you into our Sixth Form and if you have any questions please contact the team.



Miss Randall
Assistant Head in charge of Sixth Form
Email: grandall@beauchamps.essex.sch.uk



Miss Gargrupe
Pastoral Lead of Sixth Form
Email: jgargrupe@beauchamps.essex.sch.uk

Sixth Form Pathways and Entry Requirements*

	Pathway 1	Pathway 2	Pathway 3
Programme of Study	3 or 4 A Levels Extended Project Qualification	A combination of A Level and BTEC courses Enrichment	A combination of AAQ/BTEC courses Enrichment
Entry Requirements	40 points from 8 qualifications including Maths and English at 5+	32 points from 8 qualifications including Maths and English at 4+	4 GCSEs including Maths and English at 4+**

* All pathways and entry requirements are subject to change - any updates will be provided as they occur.

Enrichment

Wednesday afternoons are set aside for Enrichment, which will include sports fixtures and a variety of other activities each week.

Available Courses

In the Sixth Form, you will be able to specialise in subjects that interest you and in which you can be successful. We offer:

A Level Courses

Level 3 National Diploma

Level 3 National Extended Certificate

Level 3 Applied Diploma

There are a wide range of A Level courses and AAQ/BTEC courses, so that students can choose subjects according to their strengths.

The table above shows the pathways that can be followed in the sixth form.

A Level courses - These courses run for two years and have all of their external exams at the end of Year 13.

Level 3 AAQ/BTEC courses - These courses are continuously assessed over a two year period.

What courses should I take?

If you don't know what courses to take, don't worry - this is not unusual. Talk to your parents and teachers and the Careers Advisor and look at the possibilities. Factors that will need to be kept in mind are subject strengths and interests, talents and abilities and your GCSE results. Look at the course descriptions, which give you all the basic information about what each qualification involves.

What if I change my mind about my course?

Once you have applied, if you change your mind about the course you have chosen, please speak to the Head of the Sixth Form Team who will be glad to deal with your enquiries.

What will my timetable look like?

You will have 18 hours of taught or supervised sessions per week. Non contact time should be used for independent study.

How do I apply?

The application form and full details on how to apply can be found at the web address below. Students will be interviewed following receipt of their application. Applications will be considered individually, and consideration will be given to other criteria such as your attitude and progress over the previous two years. You will be informed of the outcome of your application by letter. If offered a place in the Sixth Form, the course you study will be dependent upon your exam results. It is also important to have a second choice Further Education institution in case you do not meet our entry requirements.

www.beauchamps.essex.sch.uk/sixthform/applying-for-sixth-form

Any updates to courses will be published in due course.

Life in Sixth Form

Beyond the academic, there are plenty of opportunities at Beauchamps for you to develop your skills and interests as an individual. The sixth form caters exceptionally well for anyone who enjoys sport. We have a state of the art 3G football pitch, which is available for use during recreational time, extra curricular time and during enrichment, alongside a fully equipped gym and sports hall. Other enrichment activities include the EPQ, the Duke of Edinburgh qualifications, food technology lessons as preparation for later life at university, debate club and STEM projects. Outside supervised study time we encourage you to broaden your social and cultural experience by participating in a wide range of activities such as theatre visits, drama and music productions, social events, charity work and fundraising, recreational sport and in supporting other students in the school in a variety of roles. You may also decide to join our Sixth Form Committee and to become a voice for the other students. Our Sixth Form Committee is an important forum for representing student views and representatives are responsible for organising extra curricular activities, social events and charity work. Previous charity events have raised money for the MacMillan Coffee Morning and Havens Hospices, and through participating in the Show Racism the Red Card day. Each year, the sixth form participates in the production and performance of a Christmas revue which is then performed for the whole school. The committee meets regularly and includes representatives from both year 12 and year 13, and their views and ideas raised are presented to the Senior Leadership Team for their consideration.

The sixth form building consists of a social common room where students may work in an informal, collaborative atmosphere, whilst also spending time with peers. The block also facilitates more focussed work through the use of a separate silent study room. While desktop computers are still provided for online research, students may use their own technology via the wireless network to complement this work. There is a separate PC room available for students to work quietly, and the Learning Resource Centre has a dedicated area for the sixth form students to use at any time.

How will I be supported as a Sixth Form student?

The student tracking system monitors students on a termly basis. The system involves a minimum of three assessment grades per subject plus input from the subject teachers on whether a student is above track, on track or below track. Progress interviews are regular and involve setting targets to ensure that students are working to their target grades in each subject. Parents, students and the school act in partnership to ensure that you reach your maximum potential.

A flow of information including letters, subject reports, student reviews and higher education information, as well as progress evenings, enable parents to support students in their work. Parents are always welcome to contact the Sixth Form Team and sixth form teaching staff to discuss progress.

Sixth Form Dress Code

Sixth form students are professional people and are required to dress smartly and be well groomed. Sixth form students should dress appropriately, as outlined in the dress code below:

- Tailored trousers
- Smart dresses with an appropriate neckline and no shorter than knee length - any dress which is shorter must be worn with black tights
- Skirts (including pencil skirts) should be no shorter than knee length - any skirt which is shorter must be worn with black tights
- A suit may be worn should a student wish to do so
- A 'business style' shirt or blouse (or smart top)
- A tie (optional)
- V-neck, fine-knit jumper or cardigan may be worn over the top of shirts
- Smart leather shoes or boots (no canvas shoes of any style, trainers, UGG boots or flip flops)
- Leather, faux leather, denim garments, shorts, tracksuits, leggings, jersey tight skirts, vest tops, strappy tops, T-shirts, sweatshirts, hoodies and items with logos or slogans are not permitted

What help will I receive in terms of careers and higher education?

The Head of Sixth Form, Pastoral Year Lead, sixth form tutors and the Independent Advice and Guidance Co-ordinator will be involved in offering you guidance. Guidance will be given on the following:

- Making initial decisions
- Completing application forms, letters and CV
- Visiting universities and places of employment
- Preparing for interviews
- Making decisions about offers
- Applying for sponsorship
- Completing your UCAS application and helping with personal statements

The Careers and Higher Education Library are always available for use and are constantly updated. You have access to computer programmes which aid personal choice. Additional support comes from Careers and Higher Education Conventions and visiting speakers.

Course Directory

This directory is designed to give you information on all courses offered. For additional information on any courses, please contact the Subject Leader or the Head of Sixth Form. Courses can only run with Governor confirmation and if there is sufficient demand to make them viable.

A Level Courses

Page

Art and Design: Fine Art	7
Art and Design: Textile Design	7
Biology.....	8
Business Studies	9
Chemistry	10
Computer Science	11
Drama & Theatre Studies	12
Economics	13
English Language and Literature.....	14
English Literature.....	15
French	16
Further Mathematics.....	17
Geography.....	18
History	19
Law	20
Mathematics	21
Physics	22
Politics	23
Psychology	24
Religious Studies (Philosophy and Ethics).....	25
Sociology.....	26
Spanish.....	27

Vocational/Applied Courses

Level 3 Diploma in Business	28
Level 3 Extended Certificate in Business	29
Level 3 Applied Diploma in Criminology Investigation	30
AAQ BTEC National in Health and Social Care	31
AAQ BTEC National in ICT.....	32
Level 3 National Extended Certificate in Marketing.....	33
Level 3 Diploma in Sport	34
Level 3 Extended Certificate in Sport	35
Level 3 National Extended Certificate in Travel and Tourism:	36

Art and Design - Fine Art

Art and Design - Textile Design

Entry Requirements

To take Art and Design, the minimum requirement is a Grade 5 in GCSE Art or other Art related subjects.

Assessment

Component 1: 60% of A Level

Personal Investigation. This is a practical investigation supported by written material. Non exam assessment set and marked by the centre and moderated.

Component 2: 40% of A Level

Response to an externally set assignment. Preparatory period plus 15 hours supervised time. Non exam assessment set and marked by the centre and moderated.

Additional Requirements

The course is designed to encourage independent enquiry and development, requiring commitment, innovation, vitality and individuality in the work produced. All students are expected to visit galleries and museums. There will be a fee to cover equipment costs, sketchbooks and some specialist materials.

Career Opportunities

A Level Fine Art and Textile Design are accepted as an entry requirement for many degree and other higher courses in a range of disciplines.

An A Level in Art is particularly appropriate for advertising, architecture, industrial or product design, fashion, history of art, teaching and work in the theatre. It can lead to careers in graphics, fashion, textiles, interior design and many others.



Biology

Entry Requirements

Grade 5 or above in higher tier GCSE Biology or Grades 6/6 in GCSE Combined Science. A grade 5 in both English and Mathematics.

Areas of Study

A Level Biology involves the study of a wide range of exciting topics, ranging from molecular Biology to the study of ecosystems from micro-organisms to mammoths. A Level Biology puts you in an extremely good position when you are applying to universities and employers.

Biology is never far from the headlines either, with the mapping of the human genome, studies to find cures and treatments for diseases and genetic modification of crops.

Throughout the two year course, you will study fundamental biological principles. Success on the course will rely heavily on the ability to carry out and evaluate biological practical assignments.

Assessment

The assessment of A Level Biology is based on exam performance and monitoring of practical competencies observed in school throughout the course. 100% of the overall A Level grade comes from external examinations, which will take place at the end of a two-year course of study.

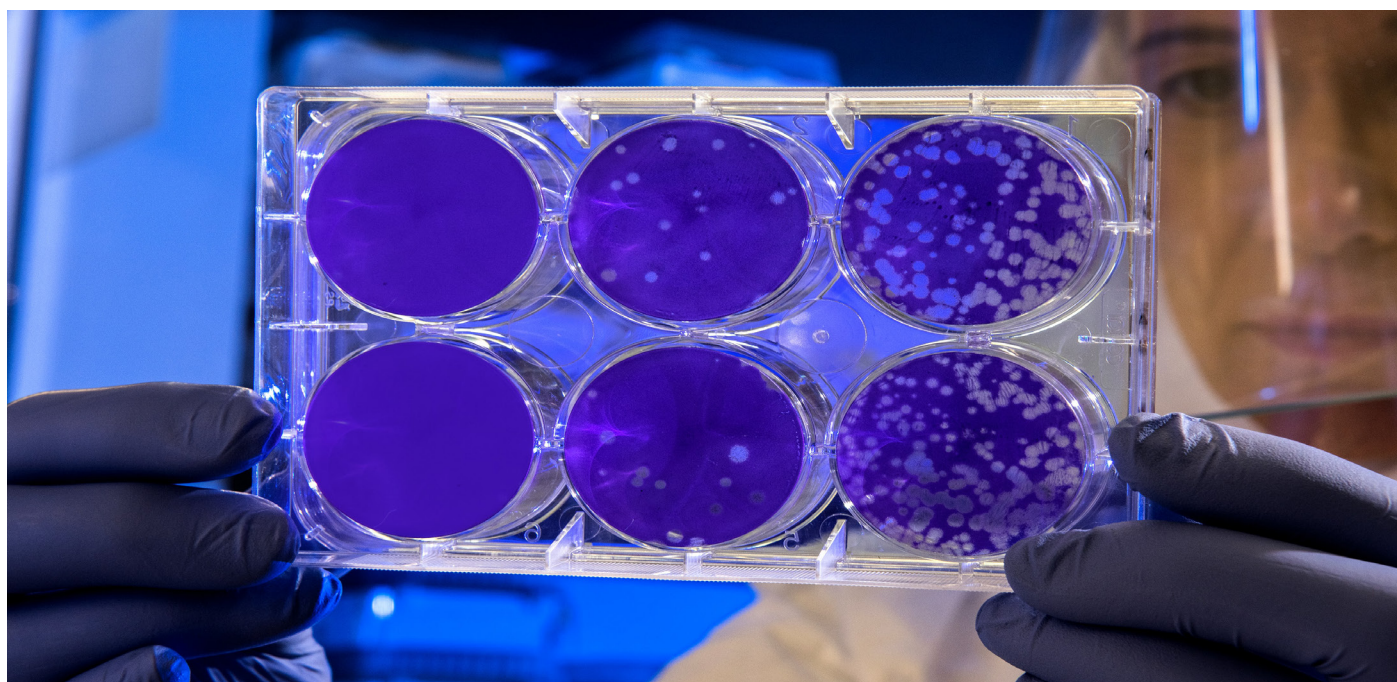
Additional Requirements

It is compulsory to attend a fieldwork trip, which will incur a cost.

Career Opportunities

Having A Level Biology can open up a world of opportunities in both university choices and career options. If you are considering applying to university to study Biology, Zoology, Ecology, Animal Science, Marine Biology, Life Sciences, Medicine, Environment Science, Forensic Science or any other subject related to the natural world, then A Level Biology is essential.

Possible career choices that require A Level Biology include: biological testing, biotechnology, independent research, food industry, nutrition, medicine, doctor, nurse, veterinarian, veterinary nurse, zoologist, zookeeper, animal care and scientist amongst a huge range of other possibilities.



Business Studies

Entry Requirements

Grade 5 or above in GCSE Business or Economics if taken, and 5 or above in both GCSE English Language and Mathematics.

Areas of Study

This A level specification (Eduqas) introduces learners to the dynamic business environment and the importance of entrepreneurial activity in creating business opportunities and sustaining business growth. Learners will have the opportunity to develop a wide range of essential skills required for higher education and employment.

Assessment

The course is 100% examination. It consists of three exams of 2 hours 15 minutes each.

- Component 1: Business Opportunities and Functions
- Component 2 – Business Analysis and Strategy
- Component 3 – Business in a Changing World.

Each exam is worth 33 and 1/3 % towards the qualification.

Career Opportunities

An A Level in Business would be useful and relevant for almost all careers either immediately after Sixth Form or after Higher Education. In particular, careers in Finance, HR, Administration, Insurance, Banking, Retailing and Accountancy, would be very suitable. There are also many opportunities at degree level for students to progress onto.



Chemistry

Entry Requirements

Grade 5 or above in higher tier GCSE Chemistry or Grades 6/6 in GCSE Combined Science. A grade 5 or above in both English and Mathematics.

Areas of Study

A Level Chemistry can be the gateway into a number of exciting career choices, and it is absolutely necessary in order to access certain degree courses at university. A Level Chemistry is an exciting, challenging subject to study and it can reward you in many surprising ways. At A Level, you will study key Chemistry concepts including Organic, Inorganic and Analytical Chemistry. In addition to learning about chemical principles, success on the course will rely heavily on the ability to carry out and evaluate chemical practical assignments.

Assessment

The assessment of A Level Chemistry is based on exam performance and monitoring of practical competencies observed in school throughout the course. 100% of the overall A Level grade comes from external examinations, which will take place at the end of a two-year course of study.

Career Opportunities

If you want to go into a career in any form of medicine then you will find A Level Chemistry is a compulsory requirement. Having an A Level in Chemistry is very desirable and is a highly-respected qualification to have in academic circles, regardless of further course choice.

Possible career and course options available to you include Medicine, Pharmacy, Veterinary Science, Chemistry, Biochemistry, Food Science/Nutrition, Forensic Science, Biological/Engineering careers, Optical Management, Optometry, Microbiology, Natural Sciences, Pharmacology, Software Engineering and Physiology. These all require A Level Chemistry as essential (unless other qualifications are offered). Careers and courses that consider Chemistry desirable include Food Technology, Nursing, Physiotherapy, Radiography, Paramedical courses, Law and Zoology.



Computer Science

Entry Requirements

Grade 5 or above in GCSE Computer Science.

Areas of Study

1. The Characteristics of contemporary processors, input, output and storage devices
2. Software and software development
3. Exchanging Data
4. Data types, data structures and algorithms
5. Legal, moral cultural and ethical issues
6. Elements of computational thinking
7. Problem solving and programming
8. Algorithms to solve problems and standard algorithms

Non-Examined Assessment involves the learner choosing a computing problem to work through according to the guidance in the specification. Including:

- Analysis of the problem
- Design of the solution
- Developing the solution
- Evaluation

Assessment

Paper 1 – Computer Systems

Written paper 40% of total A Level. Covers areas of study 1-5 shown above.

Paper 2 – Algorithms and programming

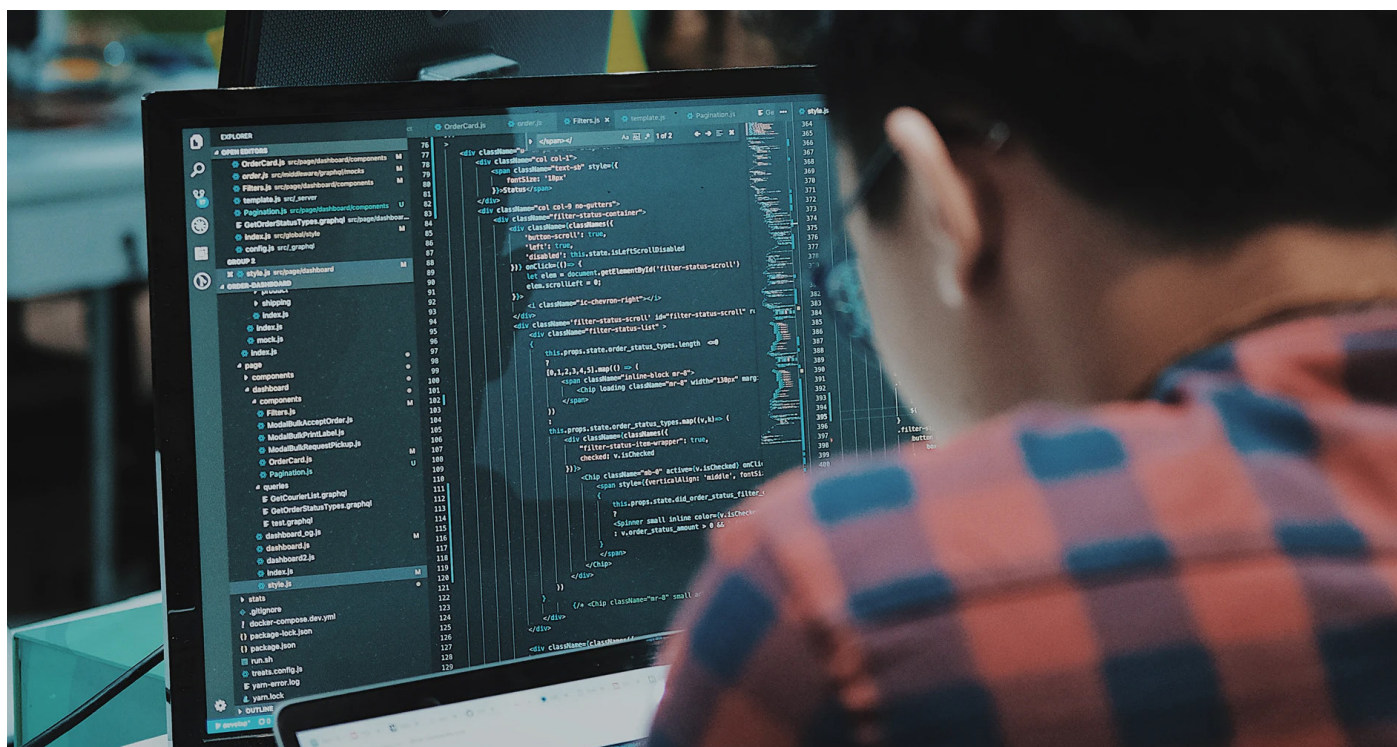
Written paper 40% of total A Level. Covers areas of study 6-8 shown above.

Non-Exam Assessment, Programming project

20% of total A Level.

Career Opportunities

Computer Science is useful for those wishing to pursue a career in computing or to study computing at a higher level, such as software development, computer systems analyst, web developer, computer hardware engineer or a database administrator.



Drama & Theatre Studies

Entry Requirements

Grade 5 or above in GCSE Drama or other Drama related subjects.

Areas of Study

A Level Drama is an exciting, creative but challenging subject to study. It will allow you to build not only performance skills but also negotiation, directorial, and design aspects of theatre. At A Level, you will study key practitioners and theatrical styles as well as a range of play texts. The course looks at the historical impact on theatrical style as well as the form of theatre and its context.

Assessment

Component 1: Theatre Workshop

Non-exam assessment: internally assessed, externally moderated 20% of qualification.

Component 2: Text in Action

Non-exam assessment: externally assessed by a visiting examiner 40% of qualification.

Component 3: Text in Performance

Written examination: 2 hours 30 minutes 40% of qualification.

Additional Requirements

Students need to be self-managed and make efficient use of independent study time. Rehearsals will take place outside of lesson time - students must be prepared to attend these rehearsals.

Career Opportunities

Drama at A Level can open doors to the following careers: actor, stage manager, arts administrator, drama teacher, drama therapist, television production assistant, radio presenter, youth community worker, journalist, marketing manager or television presenter.



Economics

Entry Requirements

Grade 5 or above in GCSE Business or Economics if taken and 5 or above in both GCSE English Language and Mathematics.

Areas of Study

Economics is an examination based course that enables students to use real-world business contexts to help them understand the complexities of the world around them.

Assessment

The course is 100% examination.

Career Opportunities

An A Level in Economics would be useful and relevant for almost all careers either immediately after Sixth Form or after Higher Education. In particular, careers in Administration, Insurance, Banking, Retailing, Accountancy, Stock Broking and the Civil Service would be very suitable. There are also many opportunities at degree level.



English Language and Literature

Entry Requirements

Grade 5 or above in GCSE English Literature or English Language.

Areas of Study

This course combines a study of English Literature with a comprehensive study of the way that the English language is crafted to create meaning and to be applicable to context in a variety of forms. Students study a variety of fiction (prose and drama) and non-fiction texts in order to analyse the way that the spoken word, language and structure are manipulated to convey theme and expression. Students will study texts from an anthology and will also answer questions on an unseen passage in the examination.

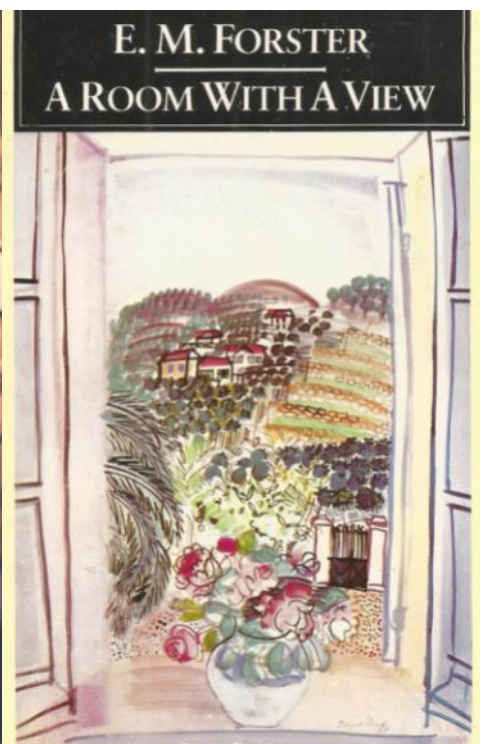
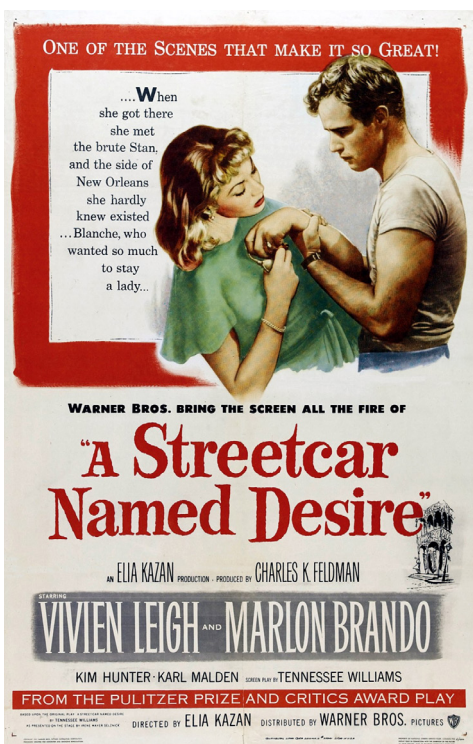
Students will have the opportunity to discuss and analyse texts read in class and also to continue in some wider reading of their own choice. The skills in studying English Language and Literature are invaluable in allowing students the opportunity to develop their own research and analytical skills whilst also furthering communication skills to an exceptionally high level.

Assessment

The course is composed of a 20% coursework element with 80% examination.

Career Opportunities

English Language and Literature is an extremely versatile subject which lends itself to a career in many disciplines. If you are interested in journalism, publishing, screen-writing, copy-writing, writing, librarianship, marketing, teaching or public relations, this would be relevant for you.



English Literature

Entry Requirements

Grade 5 or above in both English Language and English Literature GCSE.

Areas of Study

This course is designed to develop an enjoyment of, and personal response to, English Literature. The course involves the reading of a wide variety of texts through the lens of genre and theory and encourages the independent study of texts within a shared context.

Students will study poetry and prose texts, both from pre and post 2000 literature. In addition, pupils will experience the study of drama texts (including Shakespeare). Students will learn to draw comparisons between how themes are represented in a range of texts and will be encouraged to develop wider reading skills independently.

Examination questions are based upon both unseen extracts or passages and previously studied material. In this way, the course allows students to develop the ability to read critically and analytically, skills which are valuable for both further study and future employment.

Assessment

The course is composed of a 20% coursework element with 80% examination.

Career Opportunities

English Literature is a highly sought after A Level in a wide variety of careers, especially those calling for excellent communication and analytical skills. If you are interested in journalism, publishing, screen-writing, copy-writing, writing, librarianship, marketing, teaching or public relations, this would be relevant for you.



French

Entry Requirements

Grade 5 or above in GCSE French.

Areas of Study

The A Level specification builds on the knowledge, understanding and skills gained at GCSE. It constitutes an integrated study with a focus on language, culture and society. It fosters a range of transferable skills, including communication, critical thinking and creativity, which are valuable to the individual and to society. Students will develop their understanding of themes relating to the society and culture of the countries where French is spoken and their language skills; they will do this by using authentic spoken and written sources in French.

The course is focused on how French-speaking society has been shaped, socially and culturally, and how it continues to change. Students study aspects of the artistic life of French speaking countries.

Assessment

Paper 1 - Listening, Reading and Writing

Written exam: 2 hours 30 minutes - 160 marks in total. 40% of A Level.

Paper 2 - Writing

One text and one film or two texts from the list set in the specification.

Written exam: 2 hours - 90 marks in total. 30% of A Level.

Paper 3 - Speaking

Individual research project and photo card.

Oral exam: 21-23 minutes (including 5 minutes preparation time). 60 marks in total 30% of A Level.

Career Opportunities

A Level French can open doors to many careers including: translator, interpreter, language teacher, bilingual secretary, travel agent, holiday resort representative, tour guide, tourist information officer, export clerk, freight forwarder, diplomat, airline crew, hotel receptionist, EU official, immigration officer, journalist, reporter, editor, estate agent, solicitor, football or sports manager, supermarket buyer, medical receptionist, restaurant manager, accountant, international charity or aid worker, police or community support officer or youth worker.



Further Mathematics

Entry Requirements

Grade 7 or above in GCSE Mathematics.

Areas of Study

Further Mathematics is an A Level qualification that both broadens and deepens the Mathematics covered in A Level Mathematics. It is designed to be studied alongside A Level Mathematics.

Assessment

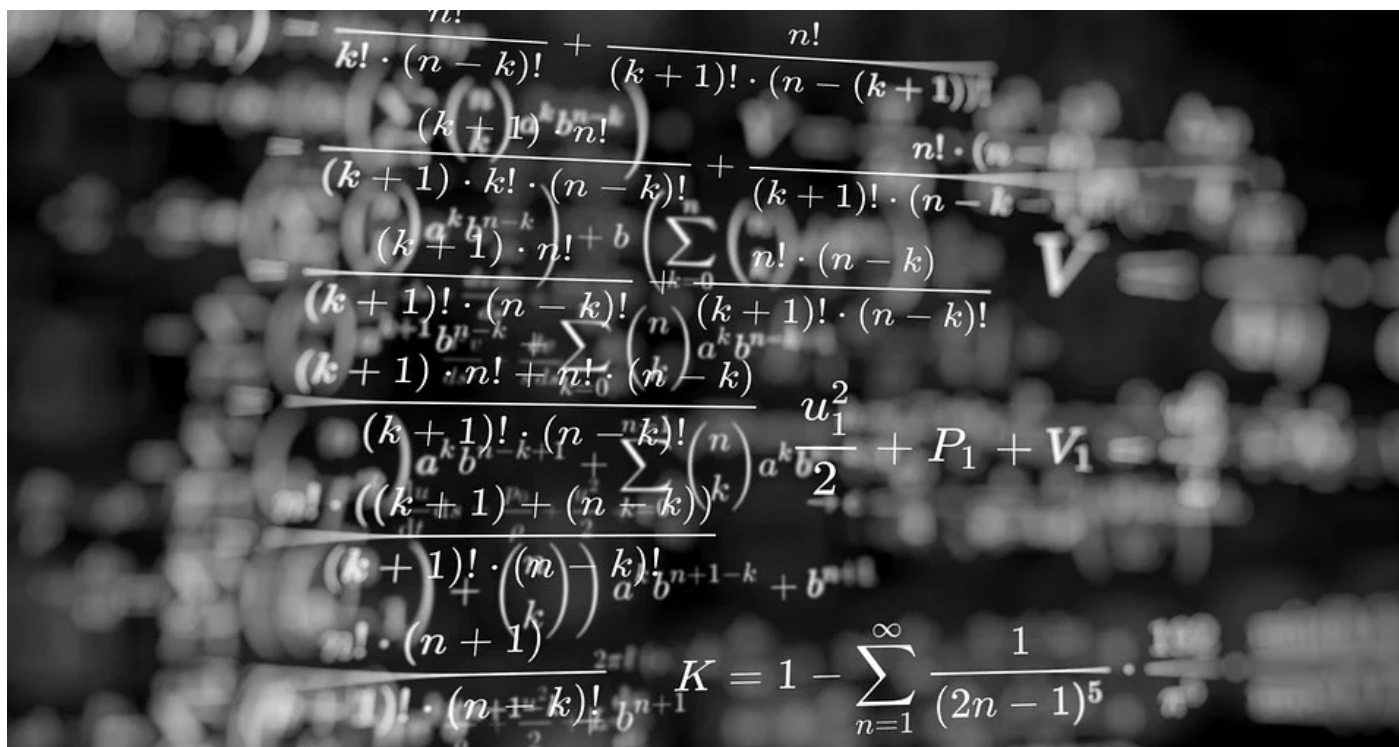
Students will sit 4 exams at the end of Year 13. These exams will be 1 hour 30 minutes long and will be equally weighted. Paper 1 will be 'Core Pure Maths 1', Paper 2 will be 'Core Pure Maths 2' and Papers 3 and 4 will be additional modules: Further Statistics 1 and Decision Maths. There is no coursework for this course.

Additional Requirements

Students should have a strong desire to work with Mathematics and be planning to take Mathematic related subjects at higher education. Students must be keen and conscientious, with a joy of working on Mathematics independently. This is an in-depth course that requires a high level of deeper thinking skills and multi-technique problem-solving.

Career Opportunities

The majority of universities offering Mathematics-rich courses will require students to have Further Mathematics qualifications. Careers in administration, insurance, banking, retailing, accountancy, teaching, stock broking and the civil service would be very accessible.



Geography

Entry Requirements

Grade 5 or above in GCSE Geography.

Areas of Study

The course will have a balance of Human and Physical Geography alongside an evaluation of issues within a geographical context. Physical topics within the course will include hazards, carbon and water cycles and coastal environment. Human units studied look at urban areas in the Changing Places unit, how the world is run in the Global Governance unit and population challenges and problems in the Population and Environment unit. All are studied at a variety of scales (local, national and global).

Assessment

There will be 2 examinations, one on Physical Geography and one on Human Geography, both 2 hours and 30 minutes and worth 80% of the qualification.

The other 20% is in the form of an internally-assessed individual investigation of approximately 3000-4000 words.

Additional Requirements

You will need to undertake fieldwork over a sustained period of time as part of an individual investigation, as well as having the possibility of attending a residential fieldtrip, which will incur a cost.

Career Opportunities

Statistics show that students with Geography A Level are among the most employable. Management and administration, marketing and finance within geographically linked and non-linked areas are the most common. Linked geographical areas include employment work, population, tourism, development aid, land and water processing. There is also the possibility of a career in teaching.



History

Entry Requirements

Grade 5 or above in GCSE History.

Areas of Study

You will study the following units from the OCR syllabus.

Unit 1: Russia 1894-1941 15%

This exam focuses on the downfall of the Tsarist regime under Nicholas II and the development of the communist state in Russia, including the rules of both Lenin and Stalin. You will study the revolutions that led to the end of the Romanov dynasty and the policies that secured the beginnings of the USSR.

You will sit an exam lasting 1 hour with two essay questions.

Unit 2: Civil Rights in the USA 1865-1992 40%

This exam focuses on the struggle of citizens in the United States to gain equality, including African Americans, Women and Native Americans. It will include the study of issues such as the New Deal, Industrialisation and key leaders including Malcolm X.

You will sit an exam lasting 2 hours 30 minutes, answering an interpretation based question and two essay questions.

Unit 3: The Later Tudors 1547-1603 25%

This exam focuses on the reigns of Edward VI, Mary I and Elizabeth I, considering both domestic and foreign issues and specific areas such as war, religion and marriage.

You will sit an exam lasting 1 hour 30 minutes, answering a source-based question and an essay question.

Unit 4: Extended Essay 20%

In this unit, you will have the opportunity to study a topic of your choice. You will be asked to choose an essay question that focuses on an area of historical debate and produce a 3000-4000 word essay. You will be expected to complete extensive independent research. You can choose to focus your question on a topic related to the other units studied at A Level.

Additional Requirements

You should be prepared to undertake a significant amount of reading and private study as part of the History course, as well as completing essays and other homework. This will include preparatory work, which you will be expected to complete in the summer before starting Year 12.

Career Opportunities

History opens up the opportunity to study many subjects at university, including History, Politics and International Relations. It is well-respected in business as an academic qualification that encourages analysis and independent research, and can lead to careers in teaching, law, journalism, government and the heritage industry.



Law

Entry Requirements

Grade 5 or above in GCSE English and in GCSE Mathematics is required. A grade 5 or above in GCSE Geography or GCSE History is recommended. No previous experience of the subject is necessary.

Areas of Study

Paper 1: The legal system and criminal law

This paper covers the following aspects of the English legal system: criminal and civil courts, the jury system, magistrates, legal funding, barristers, solicitors and judges. Criminal law covers murder, manslaughter, non-fatal offences, theft, robbery and burglary as well as defences available.

There will be a 2 hour exam with 2 essays on the English legal system and extended response questions based on a criminal scenario. In your response, you will be expected to apply the law.

Paper 2: Law making and the Law or Tort

This paper covers how laws are made by parliament and judges and how it can be reformed. Tort includes nuisance, negligence and occupiers' liability.

There will be a 2 hour exam with 2 essays on law making and extended-response questions based on a legal scenario, in which you will be expected to apply the law.

Paper 3: Further Law (including contract law)

This paper looks at concepts of law and morality, law and justice, law and technology and the role of

law in society. Students will be expected to know contract law to apply to a legal scenario.

There will be a 2 hour exam with a choice of extended-response questions for the concepts and a legal scenario with extended-response questions on contract law.

All papers are equally weighted.

Additional Requirements

You will need good written communication skills, as Law is an academic subject requiring essay writing. You will need to be able to recall large amounts of information including definitions, case names, facts and legal principles. Reading widely is encouraged and we plan to visit various courts.

Career Opportunities

The study of Law at A Level enables students to develop their analytical and critical thinking skills. Studying Law develops students' problem-solving skills through the application of legal rules, together with an understanding of legal method and reasoning. These skills provide excellent preparation for those students who wish to progress to degree level study or pursue a wide range of careers. Opportunities include Law (solicitor, barrister, legal executive), the police force, journalism, social services and various business and European opportunities.



Mathematics

Entry Requirements

Grade 6 or above in GCSE Mathematics.

Areas of Study

A Level Mathematics is a demanding yet satisfying A Level. It requires determination and hard work; independent study and practice is essential. Due to the amount of algebra involved, it is vital that students enjoy and understand algebra in depth. They must be able to solve equations with ease and also be able to break big problems into smaller, more manageable parts.

Assessment

Students will sit 3 exams at the end of Year 13. These exams will be 2 hours long and will be equally weighted. Paper 1 will be 'Pure Maths 1', Paper 2 will be 'Pure Maths 2' and Paper 3 will be 'Statistics and Mechanics'. There is no coursework for this course.

Career Opportunities

Mathematics is one of the most sought after qualifications for degrees in sciences and finance as well as by employers. It shows the ability for logical thinking and problem solving. Mathematics opens the doors to a vast range of careers as the skills are so readily transferable.



Physics

Entry Requirements

Grade 5 or above in higher tier GCSE Physics or Grade 6/6 in GCSE Combined Science. A grade 5 or above in both English and Mathematics.

Studying A Level Mathematics and A Level Further Mathematics alongside Physics would enhance understanding of the subjects as there are many cross-over topics.

Areas of Study

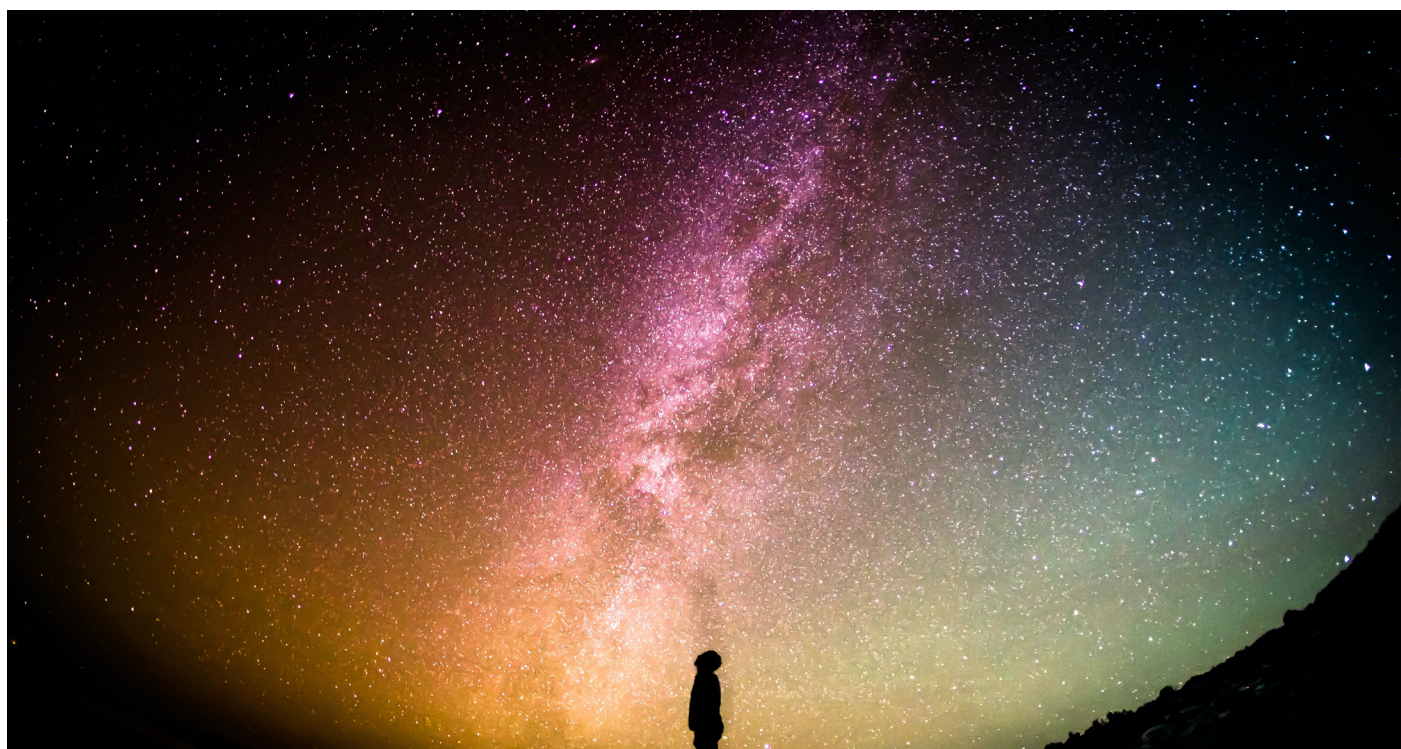
Physics provides a broad training in skills that are valued by all employers: an ability to grasp concepts quickly, a determination to find coherent answers, along with problem-solving, analytical, mathematical and IT skills. From the Big Bang to quarks, with A Level Physics you will learn how the universe works and begin to understand the mysteries it presents.

Assessment

The assessment of A Level Physics is based on exam performance and monitoring of practical competencies observed in school throughout the course. 100% of the overall A Level grade comes from external examinations, which will take place at the end of a two-year course of study.

Career Opportunities

Studying Physics at A Level can be the first step towards a variety of careers in many different fields. It provides you with many of the most sought-after skills employers are looking for in a competitive job market. Some of the areas to which A Level Physics can lead are the armed forces, nanotechnology, astronomy, oil and gas, earth sciences, education, renewable energy, engineering, scientific research, medicine and allied professions, space exploration industries, meteorology and climate change and telecommunications.



Politics

Entry Requirements

Grade 5 or above in GCSE English Language or Literature.

Areas of Study

Government and Politics of the UK

Nature and sources of the British Constitution, structure and role of Parliament, the Prime Minister and Cabinet, the judiciary, devolution, politics of the UK including democracy, elections, referendums, political parties, pressure groups and the European Union.

Government and Politics of the USA

The US Constitution, congress, the President, Judiciary and Supreme Court, electoral process, political parties, pressure groups and civil rights.

Comparative Politics

Comparison of UK and US political systems.

Political Ideas

Liberalism, Conservatism, Socialism and Anarchism.

Assessment

There will be 3 examinations, all 2 hours with equal weighting.

Career Opportunities

The study of Government and Politics provides an ideal basis for a career in government or the civil service. However, it also opens many other career paths such as law, journalism, public relations, marketing, business and finance, human resources and charity work.



Psychology

Entry Requirements

Grade 5 or above in GCSE English Language or Literature and Mathematics. A Grade 5 in GCSE Psychology if taken.

Areas of Study

This course covers a number of topics over the two years.

In Year 12 the following topics will be studied:

Approaches, Social Influence, Attachment, Psychopathology, Memory, Biopsychology and Research Methods. Each of these topics investigate a variety of different theories and research studies conducted by psychologists and we look at the strengths and weaknesses of each.

In Year 13 the following topics will be studied:

Further Research Methods, Further Biopsychology, Issues and Debates, Relationships, Schizophrenia and Forensic Psychology. Each of these topics also focus on psychological theory and supporting and/or contradictory research.

Assessment

All three exam papers will be sat at the end of Year 13. Each paper is 2 hours long and worth 96 marks, with a mixture of multiple choice questions, short answer questions and extended writing questions.

Career Opportunities

Psychology A Level is helpful in a range of different careers including: counselling, the police force, occupational psychology, management, sports psychology, personnel work, criminology, teaching and prison work.



Religious Studies (Philosophy and Ethics)

Entry Requirements

Grade 5 or above in GCSE English Literature or English Language and Grade 5 or above in GCSE Religious Studies if taken.

Areas of Study

Philosophy

Students will look at concepts of “proof” and “knowledge.” They will be asked to examine whether or not the concept of “God” can be “proven” and look at challenges to these “proofs.” They will also look at arguments, such as, whether or not an uploaded “copy” of yourself would be considered an “afterlife.”

Ethics

The meaning of good, bad, right and wrong. The application of natural moral law, situation ethics and virtue ethics (Human and non-human life and death), Introduction to meta-ethics (Divine command theory, utilitarianism, intuitionism).

Study of Religion (Christianity)

Looks at some of the big issues facing religion today including gender and sexuality, science, the challenge of secularisation and migration and religious pluralism.

Philosophy and Ethics in Dialogue with Religion

How religion has both affected and been affected by both philosophy and ethics.

Assessment

There will be two 3 hour examinations with equal weighting.

Career Opportunities

Religious Studies can lead to a range of future careers, due to the nature of the subject, you will have a rich knowledge of diverse cultures that means you have the opportunity to embrace working in industries around the world, such as archaeology, human resources, psychotherapy, local government officer, the paralegal, a marketing executive, teaching, solicitor, barrister.



Sociology

Entry Requirements

Grade 5 or above in any Humanities subject as well as Grade 5 or above in GCSE English Language or Literature.

Areas of Study

Sociology is the study of how society is organised and how we experience life. A level Sociology is a course for students who enjoy working with others and having knowledgeable debates on a range of different social topics.

Paper 1: Education and Methods

Education includes looking at who achieves highest in education and why; the purpose of education and who benefits from the education system as it is. It also explores how social policy may have impacted on the experience of education for some, and whether that change is beneficial for them or not.

Methods addresses the different methods used by sociologists to research the society around them, it includes asking questions about whether or not sociology could or should be a science and exploring ethical issues with researching human interactions.

Paper 2: Topics in Sociology

Option 1 - Families and Households: This examines questions such as, what is meant by the

term “family”, who the family benefits in society and how family structures may be changing.

Option 2 - Beliefs in society: This examines ideas such as the purpose or function of religion in society, whether or not religious belief is declining or simply changing and why; and whether religion is a force for change in society or a force for stability.

Paper 3: Crime and Deviance with Theory and Methods

Crime and Deviance asks questions about why crime is committed and how criminality could be reduced. It looks at the different types of crime including green and state crimes and societies attitudes towards them.

Theory and Methods addresses more methodological questions as well as looking at different viewpoints in sociology.

Assessment

Three two-hour exams at the end of the course with equal weighting.

Career Opportunities

An A level in Sociology is a challenging and stimulating course that is widely recognised and highly respected by both universities and employers. It is ideally suited towards a career in the police, law, education, medicine and social work.



Spanish

Entry Requirements

Grade 5 or above in GCSE Spanish.

Areas of Study

Throughout the A Level, students will study two main themes.

Social Issues and Trends

Students will study topics such as the changing nature of families, the influence of technology in society, as well as equality within Hispanic society.

Political and Artistic Culture

Students study Spain's varied and vibrant culture of music, film, customs and traditions, food, regional languages, art and history as well as pre-Hispanic civilisations such as Machu Picchu and La Alhambra.

Alongside these themes, we will dive into a Spanish language book and film. Students will also create their own Independent Research Project (IRP) relating to a Spanish topic which is particularly interesting to them.

Assessment

You will sit 3 papers:

- Paper 1: Listening, Reading and Writing (translations) 50% of the A Level.

- Paper 2: Writing (one book and one film) 20% of the A Level.
- Paper 3: Speaking (discussion of a subtheme and presentation of an individual research project) 30% of the A Level.

Career Opportunities

Spanish is a language with around 500 million native speakers and is the second most spoken language in the world! Spanish is therefore one of the most important languages on the international community, not just in Europe but across the globe and so the ability to speak both Spanish and English is an advantage on the international job market as it enhances your skills in analysing, discussing, and categorising information and ideas and in turn opens the doors of to many careers such as an academic researcher, diplomatic service officer, intelligence analyst (MI5, MI6, GCHQ), international aid/development worker, interpreter, political risk analyst, teacher and translator as well as working at a Spanish-speaking company.

It is also a big accomplishment which brings with it great satisfaction and added confidence. Immersion in a foreign culture can open whole new avenues of self-exploration and personal growth.



Vocational Options

Level 3: Diploma in Business

(Equivalent to 2 A Levels)

Entry Requirements

Four GCSE Grade 4 or above, including English and Mathematics.

Areas of Study

This course provides an overview of all aspects of business and offers the opportunity to gain practical business experience. Students study 8 units across two years covering a range of areas including the following: Exploring Business, Developing a Marketing Campaign, Personal and Business Finance, Managing an Event, International Business, Principles of Management and Business Decision-Making.

Assessment

Three two-hour exams at the end of the course with equal weighting.

Additional Requirements

Students undertaking the diploma should select one additional subject at A Level or BTEC. Students need to be self-managed and make efficient use of independent study time. Students should be able to meet strict deadlines and have excellent attendance. The course requires students to work closely with local businesses, undertaking real-life tasks and managing events. Students are expected to provide all required stationery for the course, and may wish to purchase the course text book to support their study.

Career Opportunities

This qualification is suitable for any student seeking a career in business or hoping to progress into higher education.



Vocational Options

Level 3: Extended Certificate in Business

(Equivalent to 1 A Level)

Entry Requirements

Four GCSE Grade 4 or above, including English and Mathematics.

Areas of Study

This course provides an overview of all aspects of business and offers the opportunity to gain practical business experience. Students study 4 units across two years covering a range of areas including the following: Exploring Business, Developing a Marketing Campaign, Personal and Business Finance, Managing an Event, International Business, Principles of Management and Business Decision-Making.

Assessment

This qualification is assessed across 4 units, including one examination and three externally-moderated tasks. The assessment will include written work and presentations as well as practical tasks.

Additional Requirements

Students undertaking the extended certificate should select two additional subjects at A Level or BTEC. Students need to be self-managed and make efficient use of independent study time. Students should be able to meet strict deadlines and have excellent attendance. The course requires students to work closely with local businesses, undertaking real-life tasks and managing events. Students are expected to provide all required stationery for the course, and may wish to purchase the course text book to support their study.

Career Opportunities

This qualification is suitable for any student seeking a career in business or hoping to progress into higher education.



Vocational Options

Level 3: Applied Diploma in Criminology Investigation

(Equivalent to 1 A Level)

Entry Requirements

Four GCSE Grade 4 or above, including English and Mathematics.

Areas of Study

The purpose of the Level 3 Applied Certificate in Criminology is to provide learners with an introduction to criminal justice and to give a context for humanities learning. Together with other relevant qualifications, such as GCE Law, Psychology and Sociology, it develops the understanding to support entry to higher education courses in the humanities sector.

We study Changing Awareness of Crime, Criminology Theories, Crime Scene to Courtroom and Crime and Punishment.

Assessment

This qualification is assessed across 4 units including 2 external assessments.

The styles of external assessment used for qualifications are as follows:

- External Assessment

- Unit 2: Criminology Theories – 90 Minute 75 Mark Paper
- Unit 4: Crime and Punishment – 90 Minute 75 Mark paper
- The other two units are assessed through an open book internal assessment over a number of days

Additional Requirements

Students undertaking the Applied diploma should select two additional subject at A Level or BTEC. Students will need the discipline to make effective use of independent study time and be able to meet strict deadlines. It is essential that students have excellent attendance due to the nature of the course. Some components of this course will be delivered practically and students will be expected to fully participate at all times.

Career Opportunities

An understanding of criminology is relevant to many job roles within the criminal justice sector, social and probation work and sociology and psychology.



Vocational Options

AAQ BTEC National in Health and Social Care

(Equivalent to 1 A Level)

Entry Requirements

Four GCSE Grade 4 or above, including English and Mathematics.

Areas of Study

The qualification covers a broad basis of study for the health and social care sector:

- Unit 1 - Human Lifespan Development
- Unit 2 - Working in Health and Social Care
- Unit 5 - Meeting Individual Care and Support Needs
- Unit 14 - Physiological Disorders and their Care.

Assessment

4 units are studied over two years. Units 1 & 2 are externally assessed via an exam. The other units are internally assessed via an assignment.

Internally assessed units are assessed internally and subject to external moderation. These units are assignment based and provide the final summative assessment of each unit. Each unit is assessed using a grading system of Distinction, Merit, Pass and Unclassified. The overall qualification is then graded using a scale of D*-P

Additional Requirements

Students undertaking the Foundation diploma should select two additional subject at A Level or BTEC. Students will need the discipline to make effective use of independent study time and be able to meet strict deadlines. It is essential that students have excellent attendance due to the nature of the course. Some components of this course will be delivered practically and students will be expected to fully participate at all times.

Career Opportunities

With this qualification you will be equipped with a range of skills, knowledge and expertise to enable you to pursue work in the Health and Social Care Sector. An alternative pathway would be to progress to higher education to study for a variety of degrees in radiography, midwifery, nursing, paramedic science, social work, physiotherapy, speech and occupational therapy.



Vocational Options

AAQ BTEC National in ICT

(Equivalent to 1 A Level)

Entry Requirements

Four GCSE Grade 4 or above, including English and Mathematics.

Areas of Study

1. Information Technology Systems
2. Creating Systems to Manage Information
3. Using Social Media in Business
4. Data Modelling or Website Development

Assessment

Unit 1: Information Technology Systems exam (externally marked)

This paper is a synoptic test that tests students' theoretical knowledge of ICT systems.

Unit 2: Cyber Security and Incident Management (externally marked)

This paper tests student's theoretical knowledge on cyber threats and how to protect against them.

Unit 3: Website Development (internally marked)

Students research, plan and develop a website that meets the needs of a client.

Unit 4: Relational Database Development (internally marked)

Students research, plan and develop a database that meets the needs of a client.

Additional Requirements

Students undertaking the extended certificate should select two additional subjects at A Level or BTEC. Students need to be self-managed and make efficient use of independent study time. Students should be able to meet strict deadlines and have excellent attendance.

Career Opportunities

Useful for those wishing to pursue a career in ICT or to study ICT at a higher level.



Vocational Options

Level 3: National Extended Certificate in Marketing

(Equivalent to 1 A Level)

Entry Requirements

Four GCSE Grade 4 or above, including English and Mathematics.

Areas of Study

This qualification includes three mandatory units covering the following content areas:

1. Careers in Marketing
2. Marketing Principles
3. Customer Communications

Assessment

There are three mandatory units, two internal and one external. Learners must complete and achieve at Pass grade or above in all mandatory units.

Additional Requirements

Students undertaking the extended certificate should select two additional subjects at A Level or BTEC. Students need to be self-managed and make efficient use of independent study time. Students should be able to meet strict deadlines and have excellent attendance. The course requires students to work closely with local employers and organisations, undertaking their own research. Students are expected to provide all required stationery for the course, and may wish to purchase the course text book to support their study.

Career Opportunities

This qualification is suitable for any student seeking a career in marketing or hoping to progress into higher education.



Level 3: Diploma in Sport

(Equivalent to 2 A Levels)

Entry Requirements

Four GCSE Grade 4 or above, including English and Mathematics.

Areas of Study

Anatomy and Physiology, Fitness Training and Programming for Health Sport and Well-being, Professional Development in the Sports Industry, Sports Leadership, Investigating Business in Sport and the Active Leisure Industry, and Skill Acquisition in Sport.

Assessment

A mixture of internal and external assessments across the course of 2 years.

Additional Requirements

Students undertaking the diploma should select one additional subject at A Level or BTEC. Students will need the discipline to make effective use of independent study time and be able to meet strict deadlines. It is essential that students have excellent attendance due to the nature of the course. Some components of this course will be delivered practically and students will be expected to fully participate at all times. As part of the course, students will be expected to support formalised activities in the lower school.

Career Opportunities

This qualification could lead to careers such as: personal fitness instructor, sports coach, sports psychologist, PE teacher or lecturer, physiotherapist, sports and leisure management, sports development.



Level 3: Extended Certificate in Sport

(Equivalent to 1 A Level)

Entry Requirements

Four GCSE Grade 4 or above, including English and Mathematics.

Areas of Study

Anatomy and Physiology, Fitness Training and Programming for Health Sport and Well-being, and Professional Development in the Sports Industry.

Assessment

A mixture of internal and external assessments across the course of 2 years.

Additional Requirements

Students undertaking the extended certificate should select two additional subjects at A Level or BTEC. Students will need the discipline to make effective use of independent study time and be able to meet strict deadlines. It is essential that students have excellent attendance due to the nature of the course. Some components of this course will be delivered practically and students will be expected to fully participate at all times. As part of the course, students will be expected to support formalised activities in the lower school.

Career Opportunities

This qualification could lead to careers such as: personal fitness instructor, sports coach, sports psychologist, PE teacher or lecturer, physiotherapist, sports and leisure management, sports development.



Vocational Options

Level 3: National Extended Certificate in Travel and Tourism

(Equivalent to 1 A Level)

Entry Requirements

Four GCSE Grade 4 or above, including English and Mathematics.

Areas of Study

This qualification includes three mandatory units covering the following content areas:

1. The travel and tourism industry
2. Different types of destinations and their importance
3. Principles of marketing in travel and tourism

Learners select one optional unit to support their progression to travel and tourism and other courses in higher education.

Assessment

There are three mandatory units, one internal and two external. Learners must complete and achieve at Near Pass grade or above in all mandatory external units and achieve a Pass or above in all mandatory

internal units. Learners must complete at least one optional unit. The course includes both externally examined units and internally assessed units.

Additional Requirements

Students undertaking the extended certificate should select two additional subjects at A Level or BTEC. Students need to be self-managed and make efficient use of independent study time. Students should be able to meet strict deadlines and have excellent attendance. The course requires students to work closely with local employers and organisations, undertaking their own research. Students are expected to provide all required stationery for the course, and may wish to purchase the course text book to support their study.

Career Opportunities

This qualification is suitable for any student seeking a career in travel or tourism or hoping to progress into higher education.



Travel and Tourism

The Football Academy

Expectations

The Football Academy has high expectations of its participants, both on the pitch playing and off the pitch in academic and school life. On the pitch, the expectation is that the players attend training regularly and are fully committed to their own and their team's development. It is paramount that they are fully immersed in a team culture which promotes hard work, respect, and commitment.

Our expectations off the pitch are that participants:

- Represent the school in the highest standards on and off the pitch
- Become part of the community family that drives and inspires everyone to achieve more
- Maintain a high work ethic and a positive attitude
- Be role models to peers, school and community
- Participate in creating a safe, valued and trusted learning environment
- Build character, resilience and personal development.

In fulfilling these expectations, participants subscribe to the belief that better people make better players.

Training

The Football Academy players will have training a minimum of 3 times a week (before and after school) and a league fixture. Training focuses on a multitude of elements with the core focus on ball manipulation, possession-based training, tactical training, and player fitness.

Being a member of the Football Academy is more than merely attending the Academy and playing

football for 2 years! A key aim for us away from the football pitch is to help develop wider opportunities for players in football. We are using our contacts with the local FA to promote coaching courses for the players to complete, so that they are not just playing football but also learning how to coach the game to local teams. We aim to provide a leadership platform for the players to use their experience and knowledge in football to be role models to the school, by helping assist KS3 football teams and tournaments. We hope to assist players with their future ventures in football, whether that be helping develop them a pathway into higher local football clubs or opening other avenues for our participants in the field of football, other than playing

Professionalism






The Football Academy aims to run a program as close to the professional academy as possible, so that players can experience an environment that is different to anything they may have experienced before. Within that, we hold weekly whole group player meetings to discuss topics, weekly themes and games. Players will also have opportunities to review their recent playing performance, focusing on strengths/weaknesses of both their performances and those of the opposition, to enhance their knowledge of football. We will also study the theory of footballing, evaluating and assessing playing formations, so that players have a cognitive understanding of the game alongside skills based activities.



Essex School Term Dates

Academic Year 2026-2027

September 2026							October 2026							November 2026							December 2026						
M	T	W	T	F	S	S	M	T	W	T	F	S	S	M	T	W	T	F	S	S	M	T	W	T	F	S	S
										1	2	3	4							1		1	2	3	4	5	6
	1	2	3	4	5	6	5	6	7	8	9	10	11	2	3	4	5	6	7	8	7	8	9	10	11	12	13
7	8	9	10	11	12	13	12	13	14	15	16	17	18	9	10	11	12	13	14	15	14	15	16	17	18	19	20
14	15	16	17	18	19	20	19	20	21	22	23	24	25	16	17	18	19	20	21	22	21	22	23	24	25	26	27
21	22	23	24	25	26	27	26	27	28	29	30	31		23	24	25	26	27	28	29	28	29	30	31			
28	29	30												30													
January 2027							February 2027							March 2027							April 2027						
M	T	W	T	F	S	S	M	T	W	T	F	S	S	M	T	W	T	F	S	S	M	T	W	T	F	S	S
				1	2	3	1	2	3	4	5	6	7	1	2	3	4	5	6	7				1	2	3	4
4	5	6	7	8	9	10	8	9	10	11	12	13	14	8	9	10	11	12	13	14	5	6	7	8	9	10	11
11	12	13	14	15	16	17	15	16	17	18	19	20	21	15	16	17	18	19	20	21	12	13	14	15	16	17	18
18	19	20	21	22	23	24	22	23	25	26	27	28		22	23	24	25	26	27	28	19	20	21	22	23	24	25
25	26	27	28	29	30	31								29	30	31					26	27	28	29	30		
May 2027							June 2027							July 2027							August 2027						
M	T	W	T	F	S	S	M	T	W	T	F	S	S	M	T	W	T	F	S	S	M	T	W	T	F	S	S
					1	2		1	2	3	4	5	6				1	2	3	4							1
3	4	5	6	7	8	9	7	8	9	10	11	12	13	5	6	7	8	9	10	11	2	3	4	5	6	7	8
10	11	12	13	14	15	16	14	15	16	17	18	19	20	12	13	14	15	16	17	18	9	10	11	12	13	14	15
17	18	19	20	21	22	23	21	22	23	24	25	26	27	19	20	21	22	23	24	25	16	17	18	19	20	21	22
24	25	26	27	28	29	30	29	30						26	27	28	29	30	31		23	24	25	26	27	28	29
31																					30	31					

	= Schooldays		= School holidays		= Bank holidays
	= Weekends		= INSET days		

In addition, schools allocate five non-pupil days out of the school days indicated, or the equivalent in disaggregated twilight sessions.

Autumn Term:	Tuesday 1 September 2026 – Friday 18 December 2026 <i>Half Term 26 October – 30 October</i>	74 days
Spring Term:	Monday 4 January 2027 – Thursday 25 March 2027 <i>Half Term 15 February - 19 February</i>	54 days
Summer Term:	Monday 12 April 2027 – Wednesday 21 July 2027 <i>Half Term 31 May – 4 June, and May Bank Holiday - 3 May</i>	67 days
		<u>195 days</u>





**The Beauchamps community is a family,
in which everyone aspires to achieve
their best and beyond.**

The information in the booklet was correct at the time of publication but it should not be assumed that there will be no changes affecting the arrangements or matters described before the start of or during the year, or in relation to subsequent school years.

Beauchamps High School
Beauchamps Drive
Wickford
Essex SS11 8LY
T: 01268 735466

E: admin@beauchamps.essex.sch.uk
W: www.beauchamps.essex.sch.uk
X: @beauchampssch

Headteacher: Mr M Harper B.A. Hons NPQH
Chair of Governors: Mr W Harris